



university of  
 groningen

faculty of behavioural and  
 social sciences

sociology

## WALM External newsletter Summer edition 2019

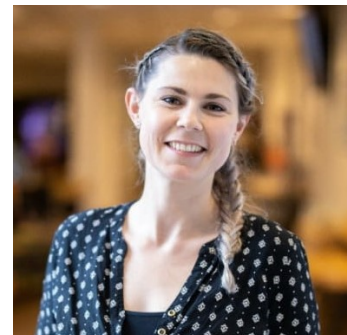
### Dear extended-WALM-network-member,

We would like to introduce to you the external newsletter of the research cluster on the Social Development of Young People from the Sociology Department of the University of Groningen, chaired by René Veenstra, Jan Kornelis Dijkstra, and Gijs Huitsing. Our research cluster may also be known to you as the WALM (Wednesday Afternoon Lunch Meetings).

With this newsletter we want to keep our extended network updated on our activities and support and facilitate collaborations between the research cluster and the extended network. More information about the WALM can be found [here](#), including a list of all members.

### New members of the WALM

In February 2019 **Gabriëlla Dekker-Calado** joined our research group. She works as a PhD student on a project of the Hanze University of Applied Sciences, with [Annelies Kassenberg](#), and [René Veenstra](#), [Gijs Huitsing](#) from University of Groningen. The goal of this project is to develop an effective strategy to facilitate cooperation between parents and teachers that can be employed in the event of bullying as a supplement to existing anti-bullying programmes. Gabriëlla's research focusses on differences between children, parents and teachers in their perception of bullying and on decisive factors for a successful cooperation between teachers and parents to counter bullying.



**Elsje de Vries** joined our research group in January 2019. She studies a new anti-bullying program for secondary education, with [Gijs Huitsing](#), [Tessa Kaufman](#) and [René Veenstra](#). She will focus on factors that ensure that teachers get started with a new anti-bullying program and the goal of the project is to be able to assess the effectiveness of this program.

[Engels](#). Her research will focus on how positive and negative peer relations affect school well-being, academic achievement, and problem behaviors in the transition from primary to secondary education.



### Members leaving the WALM

[Chaim la Roi](#) successfully defended his dissertation on the 10th of January. The title of his dissertation was: *Stigma and Stress: Studies on Attitudes towards Sexual Minority Orientations and the Association between Sexual orientations and Mental Health*. He was (co-) promoted by [René Veenstra](#), [Jan Kornelis Dijkstra](#), and [Tina Kretschmer](#). A PDF version of his dissertation can be found [here](#). He currently works as a postdoctoral researcher at the Institute for Futures Studies and the Swedish Institute for Social Research, studying social inequality and youth development.

[Ashwin Rambaran](#) will defend his dissertation on the 23rd of September. The title of his dissertation is: *The Classroom as Context for Bullying: A Social Network Approach*. Two chapters of his dissertation will be forthcoming in *Child Development and Aggressive Behavior*. He currently works as a postdoctoral researcher at the Department of Developmental Psychology and Socialisation at the University of Padova, Italy, where he studies the social networks of young Italian adolescents paying special attention to understand adolescents' bystander behavior in bullying through the interplay of individual and contextual morality.



Chaim la Roi being congratulated with successfully defending his dissertation by René Veenstra

## Looking back: our activities in the first half of 2019

### Conferences

#### PRO-Meeting

Earlier this year, at the end of January, a large part of our research group joined the Peer Relations Onderzoekers meeting in Amsterdam, where [Julia Torres](#), [Ashwin Rambaran](#), [Danelien van Aalst](#) and [Sanne Kellij](#) presented their work.

#### SRCD

In March of this year, [Laura Baams](#), [Tina Kretschmer](#), [Eleonora Marucci](#), [Diego Palacios](#), [Ashwin Rambaran](#) and [Julia Torres](#) presented their work at [Society of Research in Child Development](#) (SRCD) in Baltimore. Diego Palacios and Ashwin Rambaran showed once again that network analysis can make important contributions to

number of us were also present at the Peers Preconference, where Tina Kretschmer led a session on open science.

### PAA

In April, [Wouter Kieken](#) presented a paper called "Discrimination, Victimization, and Hazardous Drinking among LGB Adults in the US: Findings from Population-Based Data" at the annual [Population Association of America](#) (PAA) meeting in Austin.

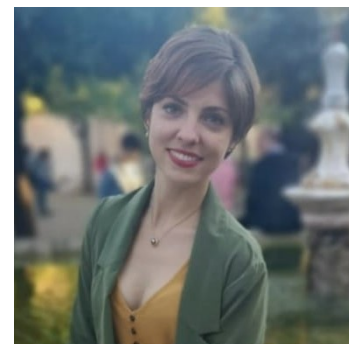


### WABF

Last June, [René Veenstra](#) presented his keynote titled "Social Norms in an Era of Individualization" at the [World Anti Bullying Forum](#) (WABF) in Dublin. He also participated in a session with all keynote speakers of the conference discussing the future of bullying research. [Gijs Huitsing](#), [Tessa Kaufman](#), [Danelien van Aalst](#), [Eleonora Marucci](#), [Ashwin Rambaran](#), [Rozemarijn van der Ploeg](#), [Xingna Qin](#) and [Sanne Kellij](#) presented their work. The great variety in keynotes and presentations were a wonderful opportunity to learn about and get inspired by new research of some of you, and start or continue fruitful collaborations.

## Guests

Since April we had the honor to host **Ana Bravo Castillo** in the WALM. She is a PhD student at the Department of Psychology, University of Córdoba, Spain. Her supervisor is Eva María Romera Félix. Her research concerns bullying roles, peer relations, social and personal variables and social longitudinal network analysis. She came to Groningen to work together with [René Veenstra](#) and [Maaïke Engels](#) on a paper that focuses on moral disengagement, need for popularity, friendship processes and bullying class norms. While in Groningen she also participated in courses on social network analyses and learned how to work with R.



[Diego Palacios](#) is abroad for an internship at the Psychology department at the Pontificia Universidad Católica de Chile with the researchers Paula Luengo and Christian Berger. He will study the effects of an intervention on prosocial behavior on the friendship and antipathy networks in Chilean schools. Diego recently published an article in the [Journal of School Psychology](#) on the association between friendship and academic networks and how the connections these networks have with academic performance and school misconduct differ in classrooms where students are grouped based on their academic ability.

In June, Professor **Brett Laursen** (Florida Atlantic University) visited our department to give a guest lecture titled "Peer Pressure During Adolescence: What's a Parent Supposed to Do?".

## Highlights of Key WALM Publications in the first half of 2019

van Rijsewijk, L. G., [Snijders](#), T. A., [Dijkstra](#), J. K., [Steglich](#), C., & [Veenstra](#), R. (2019). [The Interplay Between Adolescents' Friendships and the Exchange of Help: A Longitudinal Multiplex Social Network Study](#). *Journal of Research on Adolescence*, doi: [10.1111/jora.12501](#)

Using longitudinal social network analyses, we examined the extent to which friendship and help coincide, how friendship contributes to the emergence and maintenance of help, and vice versa.

Results showed that the tendency to exchange help was higher within rather than outside friendships. In particular, adolescents were more often helped by *mutual* friends than by *non-friends* or *non-mutual* friends. There was, however, only *partial* overlap between friendship and help: Namely, help was quite prominent among non-friends. Moreover, it was found that friends do not always help each other. Finally, we found that help also took place before friendships were established. Looking at the maintenance of friendship over time, mutual help was important for the maintenance of friendship, but not for the *initiation* of friendship. Looking at the maintenance of help exchange, we found that particularly mutual friendships provide a context in which help continues to take place.

[Van der Ploeg](#), R., [Steglich](#), C., & [Veenstra](#), R. (2019). [The way bullying works: How new ties facilitate the mutual reinforcement of status and bullying in elementary schools](#). *Social Networks*, doi: [10.1016/j.socnet.2018.12.006](#)

This study addresses the puzzle how high-status bullies in elementary school maintain high status among their classmates. We focused on how bullying affects the creation, dissolution, and maintenance of status attributions, and vice versa. Longitudinal peer nomination data were obtained from 2055 Dutch students (50% boys, age: 8-11). We found age differences in our effects: Whereas the youngest students punished bullying by not attributing status to the bully, this turned into a reward of bullying among the oldest students. Unexpectedly, high-status bullies seemed to avoid continual

[Kaufman](#), T. M. L., [Kretschmer](#), T., [Huitsing](#), G., & [Veenstra](#), R. (2019). [Caught in a vicious cycle? Explaining bidirectional spillover between parent-child relationships and peer victimization](#). *Development and Psychopathology*. doi: [10.1017/S0954579418001360](#)

Relationships with parents and peers are crucial for children's socialization, but how do parent-child and peer relationships mutually affect each other? Based on data from 9,770 children ( $M_{\text{age}} = 9.16$ ,  $SD = 1.29$ ), results from random intercept cross-lagged panel models showed that higher parental rejection and lower parental warmth predicted increases in peer victimization and vice versa across waves. Moreover, children's internalizing and externalizing symptoms partially mediated spillover in both directions. Thus, children might get caught in persistent problems in two important social domains that influence each other through children's maladjustment. Family and school interventions should be integrated to prevent a downwards spiral.

[Savickaitė](#), R., [Dijkstra](#), J. K., [Kreager](#), D., [Ivanova](#), K., & [Veenstra](#), R. (2019). Friendships, Perceived Popularity, and Adolescent Romantic Relationship Debut. *The Journal of Early Adolescence*. [10.1177/0272431619847530](#)

In this study, we examined how popularity among peers and friendships is predictive of adolescents' first-time involvement in a romantic relationship (referred to as romantic relationship debut). Our aim was twofold: first, to untangle the unique effects of friendships and perceived popularity. Second, to separate same- and cross-gender peer nominations. Using longitudinal data of 590 Dutch adolescents age 12 to 18 (57 % girls) from TRAILS (Tracking Adolescents' Individual Lives Survey), results are consistent with the hypothesis that cross-gender friendships and cross-gender popularity increases the chances of a romantic relationship debut. Findings indicate that peer evaluations by cross-gender peers of both friendships and popularity



You can find a list of the latest WALM publications [here](#).

### René Veenstra elected for Royal Holland Society of Sciences and Humanities

[René Veenstra](#) has been elected as member of the Royal Holland Society of Sciences and Humanities ([Koninklijke Hollandsche Maatschappij der Wetenschappen](#)). The Royal Holland Society of Sciences and Humanities is the oldest learned society in the country today and is constituted as a dual body comprising approximately 350 "science promoters" (known as "directors") and an equal number of active scholars (known as "members"), drawn from the natural sciences, the humanities and the social sciences. Membership is granted by invitation only.



### Contact details

This newsletter is a product of the WALM research cluster on the Social Development of Young People at the University of Groningen. Do you have questions about this newsletter or our research cluster? Contact the WALM administrators (Danelien van Aalst & Wouter Kiekens) at [WALM@rug.nl](mailto:WALM@rug.nl). More information can be found on the [WALM website](#) or the website of [René Veenstra](#).

Forward

This email was sent to [d.a.e.van.aalst@rug.nl](mailto:d.a.e.van.aalst@rug.nl)  
[why did I get this?](#) [unsubscribe from this list](#) [update subscription preferences](#)  
University of Groningen · Grote Rozenstraat 31 · Groningen, Gr 9712TG · Netherlands

